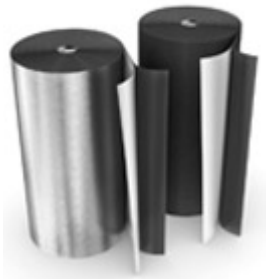
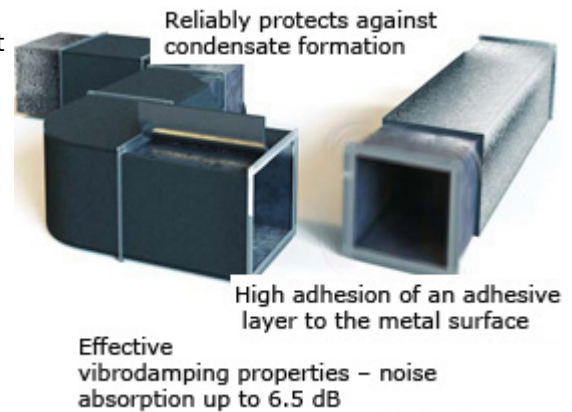


Cheets (rolls) Energoflex® Black Star Duct

Description



Energoflex® Black Star Duct is a specialized self-adhesive material for heat -, sound insulation of air ducts in ventilation and air-conditioning systems. It is made of polyethylene foam, possesses a closed cellular structure. Secures from condensate formation and thermal losses, is an effective noise-absorbing and vibrodamping material. It is easy-to-mount, non-hazardous to health and environmentally safe. Its production is available in two types: without a covering - Black Star Duct and with the aluminum foil covering- Black Star Duct AL.



It is necessary to consider that at insulation of cold air ducts the presence of the aluminum foil covering enlarges thickness of an insulating layer.



An advanced antiadhesion coating can be easily separated from the basis, thus simplifying the mounting and saving time for the insulation installation.



Black Star Duct - self-adhesive:	Black Star Duct AL - self-adhesive with the aluminum foil covering:
Economic	Easy to produce
Aesthetically acceptable	It is protected from ultra-violet radiation

Specifications



Specifications

Feature	Value	Method	
Maximum service temperature, °C	+95	GOST 32312-2011	
Thermal Conductivity, λ, W/(m·°C)	at 10°C	GOST 7076-99	
	at 20°C		
	0,040	0,042	0,043
Water vapour diffusion resistance, μ	3000	GOST 25898-2012	
Reaction to fire	G1	TR №123-F3 at 22.07.2009, GOST 30244	
Water absorption, kg/m²	0,094	GOST EN 1609-2011	
Environmental Aspects	Chlorofluorohydrocarbons free		
Adhesion of a glutinous layer to a metal surface, g/cm	600	GOST 24944-81	
Corrosion safety	High resistance to aggressive construction materials - cement, concrete, gypsum, lime (but Black Star Duct AL)		

Range



Range

Item	Article	Thickness	Width	Length	Quantity per roll
Black Star Duct					
Cheet (roll) Energoflex® Black Star Duct 3/1,0-30	EFXR03130BSDUC	3 mm	1 m	30 m	30 m ²
Cheet (roll) Energoflex® Black Star Duct 5/1,0-20	EFXR05120BSDUC	5 mm	1 m	20 m	20 m ²
Cheet (roll) Energoflex® Black Star Duct 8/1,0-12	EFXR08112BSDUC	8 mm	1 m	12 m	12 m ²
Cheet (roll) Energoflex® Black Star Duct 10/1,0-10	EFXR10110BSDUC	10 mm	1 m	10 m	10 m ²
Cheet (roll) Energoflex® Black Star Duct 15/1,0-7	EFXR1517BSDUC	15 mm	1 m	7 m	7 m ²
Cheet (roll) Energoflex® Black Star Duct 20/1,0-5	EFXR2015BSDUC	20 mm	1 m	5 m	5 m ²
Black Star Duct AL					
Cheet (roll) Energoflex® Black Star Duct AL 3/1,0-30	EFXR03130BSDUCAL	3 mm	1 m	30 m	30 m ²
Cheet (roll) Energoflex® Black Star Duct AL5/1,0-20	EFXR05120BSDUCAL	5 mm	1 m	20 m	20 m ²
Cheet (roll) Energoflex® Black Star Duct AL8/1,0-12	EFXR08112BSDUCAL	8 mm	1 m	12 m	12 m ²
Cheet (roll) Energoflex® Black Star Duct AL10/1,0-10	EFXR10110BSDUCAL	10 mm	1 m	10 m	10 m ²
Cheet (roll) Energoflex® Black Star Duct AL15/1,0-7	EFXR1517BSDUCAL	15 mm	1 m	7 m	7 m ²
Cheet (roll) Energoflex® Black Star Duct AL20/1,0-5	EFXR2015BSDUCAL	20 mm	1 m	5 m	5 m ²

Packaging



Packed into cartons with dimensions of 1020 x 395 x 395 mm.

standard size	thickness, mm	width, m	length, m	quantity per package, m ²	gross weight (Duct / Duct AL), kg	package volume, m ³
3/1,0-30	3	1	30	30	9,06 / 10,11	0,16
5/1,0-20	5	1	20	20	7,41 / 8,11	0,16
8/1,0-12	8	1	12	12	6,11 / 5,91	0,16
10/1,0-10	10	1	10	10	5,81 / 5,71	0,16
15/1,0-7	15	1	7	7	5,41 / 5,71	0,16
20/1,0-5	20	1	5	5	5,01 / 5,31	0,16

Contact adhesive Energoflex® Extra



Energoflex® Extra contact adhesive is used for joining insulation junctions.		Article
Volume	Approximate consumption of 1L of contact adhesive:	
Pipes 6 mm thick	240-300 linear m	
Pipes 9 mm thick	160-200 linear m	
Pipes 13 mm thick	110-140 linear m	
Pipes 20 mm thick	70-90 linear m	
Pipes 25 mm thick	50-60 linear m	
Rolls and plates	~5 m ²	
Package:	0,5 L metal can	EFXADH0/5EXT
	0,9 L metal can	EFXADH0/8EXT
	2,6 L metal can	EFXADH2/6EXT
Storage temperature:	От + 10 до + 40°C	
Use temperature:	From + 10 to + 40°C	


Montage knife




A montage knife with a specific sharpening is intended for the insulation cutting. The knife has a special form and dimensions allowing to simplify the work of a professional fitter as much as possible.		Артикул
Blade length:	270 mm	EFXKNIFE


Reinforced tape Energoflex®

	Reinforced self-adhesive tape Energoflex® of gray color is applied at installation of Energoflex® Super insulation. Due to the reinforcing net the tape possesses high rupture strength.		Article
	Approximate expenditure:	1,15 - 1,45 of the straight piping length of a pipeline; 26 m on 10 m ² isolated surface	
	Width:	48 mm	
	Height:	10 m	EFXL04810ARSKGR
		25 m	EFXL04825ARSKGR
		50 m	EFXL04850ARSKGR
Temperature:	Not below 10°C		

	Reinforced self-adhesive tape Energoflex® of black color is applied at installation of Energoflex® Black Star insulation. Due to the reinforcing net the tape possesses high rupture strength.		Article
	Approximate expenditure:	1,15 - 1,45 of the straight piping length of a pipeline; 26 m on 10 m ² isolated surface	
	Width:	48 mm	
	Height:	25 m	EFXL04825ARSKBK
		50 m	EFXL04850ARSKBK
Temperature:	Not below 10°C		

	Reinforced self-adhesive tape Energoflex® of blue and red colors is applied at installation of Energoflex® Super Protect insulation. Due to the reinforcing net the tape possesses high rupture strength.		Article
	Approximate expenditure:	1,15 - 1,45 of the straight piping length of a pipeline;	
	Width:	48 mm	
	Height, colour:	25 m, blue	EFXL04825ARSKBL
		25 m, red	EFXL04825ARSKRD
Temperature:	Not below 10°C		

Aluminium tape Energoflex®

	Aluminium self-adhesive tape Energoflex® is applied at gluing the joints of insulating items Energoflex® with AL coating and covering material Energopack® TK.		Article
	Thickness:	30 mcm	
	Width:	50 mm	EFXL05050ALSK
		100 mm	EFXL10050ALSK
	Length:	50 m	
Temperature:	Not below 10°C		