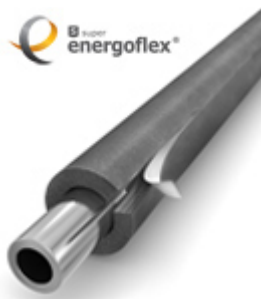
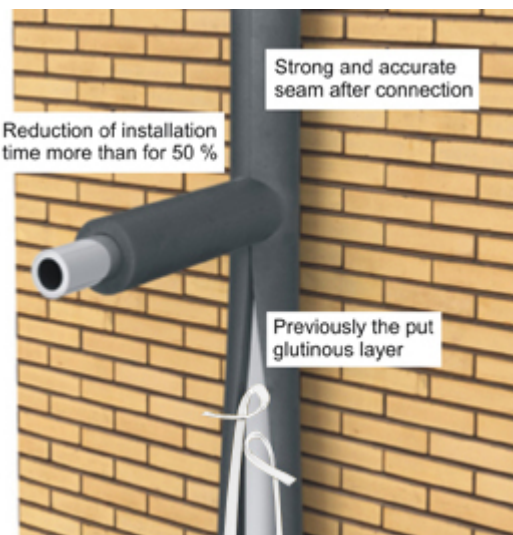


Tubes Energoflex® Super SK 2m

Description



Tubes Energoflex® Super SK are a version of tubes Energoflex® Super and differ existence of a longitudinal section on which both parties the glutinous layer previously is put. It allows to simplify and accelerate considerably installation of insulating designs, and also to lower a consumption of glue. Application of being self-glued tubes gives the chance even to nonprofessionals to execute accurate and high-quality installation.



- At application in buildings there is no need for use of vapour barrier and protective layers.
- Group of flammability G1.



- Previously the put glutinous layer allows to reduce considerably time of installation and a consumption of glue.



Specifications



Specifications

Feature	Value			Method
Maximum service temperature, °C	+95			GOST EN 14707-2011
Thermal Conductivity, λ, W/(m·°C)	at 10°C	at 20°C	at 30°C	GOST 32025-2012
	0,038	0,039	0,040	
Water vapour diffusion resistance, μ	4500			GOST 32303-2011
Reaction to fire	G1			TR (technical regulations) No. 123-FZ (Federal Law) dated 22.07.2009, GOST 30244
Water absorption, kg/m ²	0,06			GOST 32301-2011
Corrosion safety	High resistance to aggressive construction materials - cement, concrete, gypsum, lime.			
Environmental Aspects	Chlorofluorohydrocarbons free			

Range



Range

Inner Ø of insulation, mm	Insulation thickness					
	Standart size					
	9 mm	Article	13 mm	Article	20 mm	Article
18	18/9-2	EFXT018092SUSK	18/13-2	EFXT018132SUSK		
22	22/9-2	EFXT022092SUSK	22/13-2	EFXT022132SUSK	22/20-2	EFXT022202SUSK
25	25/9-2	EFXT025092SUSK	25/13-2	EFXT025132SUSK	25/20-2	EFXT025202SUSK
28	28/9-2	EFXT028092SUSK	28/13-2	EFXT028132SUSK	28/20-2	EFXT028202SUSK
35	35/9-2	EFXT035092SUSK	35/13-2	EFXT035132SUSK	35/20-2	EFXT035202SUSK
42	42/9-2	EFXT042092SUSK	42/13-2	EFXT042132SUSK	42/20-2	EFXT042202SUSK
48	48/9-2	EFXT048092SUSK	48/13-2	EFXT048132SUSK	48/20-2	EFXT048202SUSK
54	54/9-2	EFXT054092SUSK	54/13-2	EFXT054132SUSK	54/20-2	EFXT054202SUSK
60	60/9-2	EFXT060092SUSK	60/13-2	EFXT060132SUSK	60/20-2	EFXT060202SUSK
76			76/13-2	EFXT076132SUSK	76/20-2	EFXT076202SUSK
89			89/13-2	EFXT089132SUSK	89/20-2	EFXT089202SUSK
110					110/20-2	EFXT110202SUSK

Packaging



Packed into cartons with dimensions of 2050 x 595 x 395 mm.

Insulation thickness, 9 mm				Insulation thickness, 13 mm				Insulation thickness, 20 mm			
standart size	quantity per package, m	gross weight, kg	package volume, m ³	standart size	quantity per package, m	gross weight, kg	package volume, m ³	standart size	quantity per package, m	gross weight, kg	package volume, m ³
18/9-2	284	9,22	0,482	18/13-2	200	10,32	0,482				
22/9-2	240	8,96	0,482	22/13-2	168	9,86	0,482	22/20-2	108	11,35	0,482
28/9-2	168	7,82	0,482	28/13-2	132	9,21	0,482	28/20-2	88	10,67	0,482
35/9-2	136	7,57	0,482	35/13-2	108	8,88	0,482	35/20-2	70	9,88	0,482
42/9-2	110	7,31	0,482	42/13-2	80	7,96	0,482	42/20-2	60	9,70	0,482
48/9-2	74	6,05	0,482	48/13-2	70	7,76	0,482	48/20-2	48	8,76	0,482
54/9-2	70	6,20	0,482	54/13-2	66	7,94	0,482	54/20-2	48	9,31	0,482
60/9-2	66	6,31	0,482	60/13-2	48	6,75	0,482	60/20-2	40	8,59	0,482
				76/13-2	40	6,76	0,482	76/20-2	26	7,10	0,482
				89/13-2	30	6,12	0,482	89/20-2	24	7,32	0,482
								110/20-2	14	5,81	0,482

Accessories


Contact adhesive Energoflex® Extra


Energoflex® Extra contact adhesive is used for joining insulation junctions.		Article
Volume	Approximate consumption of 1L of contact adhesive:	
Pipes 6 mm thick	240-300 linear m	
Pipes 9 mm thick	160-200 linear m	
Pipes 13 mm thick	110-140 linear m	
Pipes 20 mm thick	70-90 linear m	
Pipes 25 mm thick	50-60 linear m	
Rolls and plates	~5 m ²	
Package:	0,5 L metal can	EFXADH0/5EXT
	0,9 L metal can	EFXADH0/8EXT
	2,6 L metal can	EFXADH2/6EXT
Storage temperature:	От + 10 до + 40°C	
Use temperature:	From + 10 to + 40°C	

Cleaner Energoflex®



Energoflex® cleaner is intended for the cleaning and degreasing of insulated surfaces and tools from Energoflex® Extra and Energocell® HT adhesive traces, as well as for its dilution to the required viscosity.

Article

Use	Approximate consumption
-----	-------------------------

Insulation of pipelines	0,02 L per 10 m of a pipeline
-------------------------	-------------------------------

Insulation of flat surfaces, tanks and devices	0.057 L per 10 m ² of the insulated surface
--	--

Insulation of fittings and accessories	0,096 L per 10 pcs. of fittings and accessories
--	---

Package:	1 L metal cans
-----------------	----------------

Storage temperature:	No more, than 40°C
-----------------------------	--------------------

EFXCLEAN1

Montage mitre box



Montage mitre box – a device from shock-resistant plastic for shape cutting of Energoflex® tubes with outer diameter up to 89 mm.

Article

EFXMBOX

Montage knife




A montage knife with a specific sharpening is intended for the insulation cutting. The knife has a special form and dimensions allowing to simplify the work of a professional fitter as much as possible.


Артикул


Blade length:	270 mm
----------------------	--------

EFXKNIFE

Reinforced tape Energoflex®

	Reinforced self-adhesive tape Energoflex® of gray color is applied at installation of Energoflex® Super insulation. Due to the reinforcing net the tape possesses high rupture strength.		Article
	Approximate expenditure:	1,15 - 1,45 of the straight piping length of a pipeline; 26 m on 10 m ² isolated surface	
	Width:	48 mm	
	Height:	10 m	EFXL04810ARSKGR
		25 m	EFXL04825ARSKGR
		50 m	EFXL04850ARSKGR
Temperature:	Not below 10°C		

	Reinforced self-adhesive tape Energoflex® of black color is applied at installation of Energoflex® Black Star insulation. Due to the reinforcing net the tape possesses high rupture strength.		Article
	Approximate expenditure:	1,15 - 1,45 of the straight piping length of a pipeline; 26 m on 10 m ² isolated surface	
	Width:	48 mm	
	Height:	25 m	EFXL04825ARSKBK
		50 m	EFXL04850ARSKBK
	Temperature:	Not below 10°C	

	Reinforced self-adhesive tape Energoflex® of blue and red colors is applied at installation of Energoflex® Super Protect insulation. Due to the reinforcing net the tape possesses high rupture strength.		Article
	Approximate expenditure:	1,15 - 1,45 of the straight piping length of a pipeline;	
	Width:	48 mm	
	Height, colour:	25 m, blue	EFXL04825ARSKBL
		25 m, red	EFXL04825ARSKRD
	Temperature:	Not below 10°C	

WATER SUPPLY

HEATING