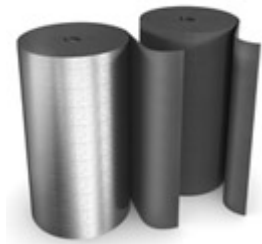
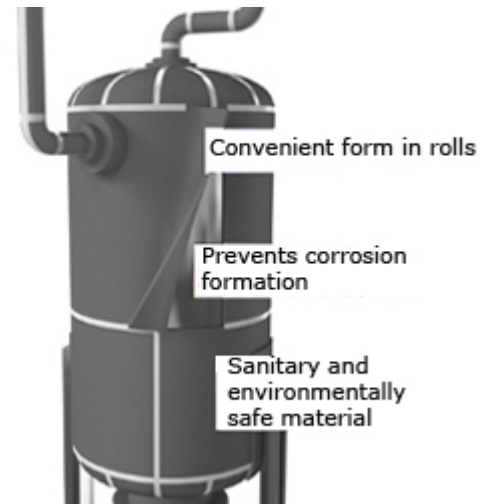


Sheets (rolls) Energoflex® Super

Description



Energoflex® Super sheets (rolls) insulating material with a closed cellular structure is an effective solution for the insulation of large-diameter pipes, fittings and tanks of different purposes. Energoflex® Super sheets (rolls) possessing all advantages of polyethylene foam materials Energoflex® - low heat conductivity, high moisture and vapour protection, flexibility and surface durability - are distinguished by high energy efficiency, feasibility of installation, durability, sanitary and ecological safety. Is issued in two options: without a covering and with a covering an aluminum foil.



This material is recommended to be used as the second and subsequent layers at designing of multilayered constructions of insulation of pipelines.



Versatile material for the insulation of large-diameter pipes, fittings and tanks.

Specifications



Specifications

Feature	Value			Method
	at 10°C	at 20°C	at 30°C	
Thermal conductivity λ , W/(m·°C)	0,039	0,040	0,041	GOST 7076-99
Maximum service temperature, °C	+ 95			GOST 32312-2011
Reaction to fire	G1			GOST 30244-94
Water vapour diffusion resistance μ , not less	4000			GOST 25898-2012
Corrosion safety	Resistance to aggressive construction materials - cement, concrete, gypsum, lime			
Environmental aspects	Chlorofluorohydrocarbons and sulfur free			

Range



Range

Item	Article	Thickness	Width	Length	Quantity per roll
Super					
Sheet (roll) Energoflex® Super 10/1,0-10	EFXR10110SU	10 mm	1 m	10 m	10 m ²
Sheet (roll) Energoflex® Super 13/1,0-7	EFXR1317SU	13 mm	1 m	7 m	7 m ²
Sheet (roll) Energoflex® Super 20/1,0-5	EFXR2015SU	20 mm	1 m	5 m	5 m ²
Sheet (roll) Energoflex® Super 25/1,0-4	EFXR2514SU	25 mm	1 m	4 m	4 m ²
Super AL					
Sheet (roll) Energoflex® Super AL 3/1,0-30	EFXR03130SUAL	3 mm	1 m	30 m	30 m ²
Sheet (roll) Energoflex® Super AL 5/1,0-20	EFXR05120SUAL	5 mm	1 m	20 m	20 m ²
Sheet (roll) Energoflex® Super AL 10/1,0-10	EFXR10110SUAL	10 mm	1 m	10 m	10 m ²
Sheet (roll) Energoflex® Super AL 15/1,0-7	EFXR1517SUAL	15 mm	1 m	7 m	7 m ²
Sheet (roll) Energoflex® Super AL 20/1,0-5	EFXR2015SUAL	20 mm	1 m	5 m	5 m ²

Packaging



Packed into cartons with dimensions of 1020 x 395 x 395 mm.

standard size	thickness, mm	width, m	length, m	quantity per package, m ²	gross weight, kg	package volume, m ³
10/1,0-10	10	1	10	10	4,11	0,16
13/1,0-7	13	1	7	7	4,23	0,16
20/1,0-5	20	1	5	5	4,31	0,16
25/1,0-4	25	1	4	4	4,31	0,16

Packed into cartons with dimensions of 1020 x 395 x 395 mm.

standard size	thickness, mm	width, m	length, m	quantity per package, m ²	gross weight, kg	package volume, m ³
3/1,0-30	3	1	30	30	4,47	0,13
5/1,0-20	5	1	20	20	4,91	0,16
10/1,0-10	10	1	10	10	4,51	0,16
15/1,0-7	15	1	7	7	4,61	0,16
20/1,0-5	20	1	5	5	4,71	0,16

Accessories



Contact adhesive Energoflex® Extra




Energoflex® Extra contact adhesive is used for joining insulation junctions.		Article
Volume	Approximate consumption of 1L of contact adhesive:	
Pipes 6 mm thick	240-300 linear m	
Pipes 9 mm thick	160-200 linear m	
Pipes 13 mm thick	110-140 linear m	
Pipes 20 mm thick	70-90 linear m	
Pipes 25 mm thick	50-60 linear m	
Pipes 32 mm thick	40-50 linear m	
Pipes 40 mm thick	30-40 linear m	
Rolls and plates	~5 m ²	
Package:	0,5 L metal can	EFXADH0/5EXT
	0,8 L metal can	EFXADH0/8EXT
	2,6 L metal can	EFXADH2/6EXT
Storage temperature:	From + 10 to + 40°C	
Use temperature:	From + 10 to + 40°C	

Cleaner Energoflex®




Energoflex® cleaner is intended for the cleaning and degreasing of insulated surfaces and tools from Energoflex® Extra and Energozell® HT adhesive traces, as well as for its dilution to the required viscosity.		Article
Use	Approximate consumption	EFXCLEAN1
Insulation of pipelines	0,02 L per 10 m of a pipeline	
Insulation of flat surfaces, tanks and devices	0.057 L per 10 m ² of the insulated surface	
Insulation of fittings and accessories	0,096 L per 10 pcs. of fittings and accessories	
Package:	1 L metal cans	
Storage temperature:	No more, than 40°C	


Montage knife

	A montage knife with a specific sharpening is intended for the insulation cutting. The knife has a special form and dimensions allowing to simplify the work of a professional fitter as much as possible.		Артикул
	Blade length:	270 mm	EFXKNIFE

Reinforced tape Energopro®

	Reinforced self-adhesive tape Energopro® of gray color is applied at installation of Energoflex® Super insulation. Due to the reinforcing net the tape possesses high rupture strength.		Article
	Approximate expenditure:	1,15 - 1,45 of the straight piping length of a pipeline; 26 m on 10 m ² isolated surface	
	Width:	48 mm	
	Height:	10 m	EPRL04810ARSKGR
		25 m	EPRL04825ARSKGR
		50 m	EPRL04850ARSKGR
Temperature:	Not below 10°C		

	Reinforced self-adhesive tape Energopro® of black color is applied at installation of Energoflex® Black Star and Energomax® insulation. Due to the reinforcing net the tape possesses high rupture strength.		Article
	Approximate expenditure:	1,15 - 1,45 of the straight piping length of a pipeline; 26 m on 10 m ² isolated surface	
	Width:	48 mm	
	Height:	25 m	EPRL04825ARSKBK
		50 m	EPRL04850ARSKBK
	Temperature:	Not below 10°C	

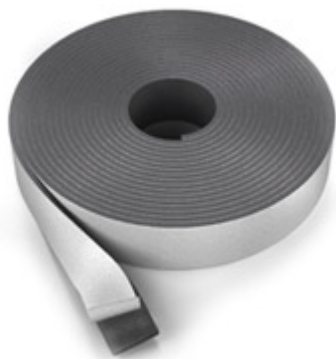
	Reinforced self-adhesive tape Energopro® of blue and red colors is applied at installation of Energoflex® Super Protect insulation. Due to the reinforcing net the tape possesses high rupture strength.		Article
	Approximate expenditure:	1,15 - 1,45 of the straight piping length of a pipeline;	
	Width:	48 mm	
	Height, colour:	25 m, blue	EPRL04825ARSKBL
		25 m, red	EPRL04825ARSKRD
	Temperature:	Not below 10°C	

Aluminium tape Energoflex®

Aluminium self-adhesive tape Energoflex® is applied at gluing the joints of insulating items Energoflex® with AL coating and covering material Energopack® TK.

Article

Thickness:	30 mcm	
Width:	50 mm	EFXL05050ALSK
	100 mm	EFXL10050ALSK
Length:	50 m	
Temperature:	Not below 10°C	

Tape Energoflex® Super SK

Self-adhesive tape Energoflex® Super SK from polyethylene foam possesses a low coefficient of heat conductivity ($\lambda_0=0,035 \text{ Вт}/(\text{м}\cdot\text{°C})$) and is intended for the insulation of fittings, accessories and hard-to-reach sections of pipelines in heating and water supply systems, as well as for the sealing of different joints.

Article

Thickness:	3 mm	EFXL0305015SUSK
Width:	50 mm	
Length:	15 m	
Temperature:	Not below 10°C	